

A dramatic, high-contrast image of a city skyline at night. In the foreground, a large excavator is silhouetted against a bright, cloudy sky. The city lights are visible in the background, creating a bokeh effect. The overall tone is dark and moody, with a strong emphasis on the silhouette of the excavator and the bright lights of the city.

Practical **knowledge**





Arab Towers Contracting Company (ATCCO) was incorporated in 2007, formerly Hisham Wadi Contracting Establishment, a leading construction company established in 1988 to serve the Jordanian market and the surrounding region. ATCCO is the result of the partnership between Hisham Wadi and Al-Manaseer group, a pioneering investment group in Jordan, with a number of subsidiaries in different businesses, such as ready mix concrete, reinforcement steel and crushed stones and cement factories. ATCCO's growth and profitability are maintained through innovation, technical improvement, devotion to safety and quality, flexible and modern management practice, highly skilled staff and our sincere beliefs in high standards of the construction industry to exceed clients' expectations.

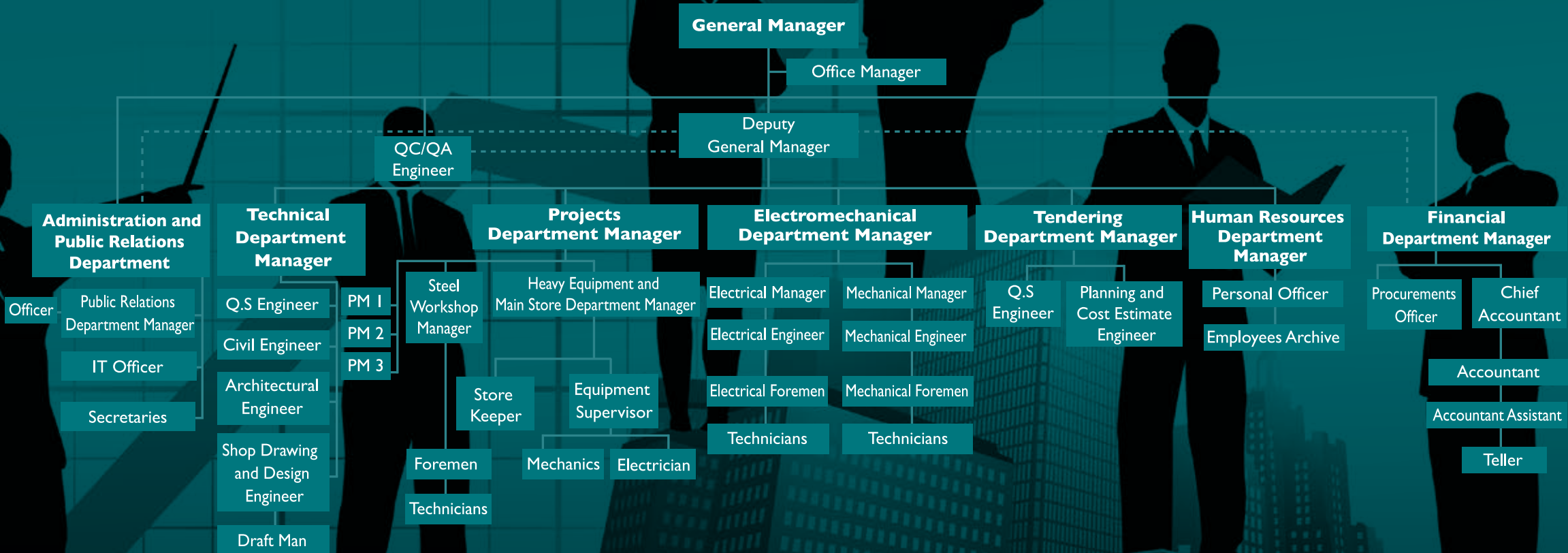
The company's experience and resources acquired over the years cover the full spectrum of construction works, ranging from heavy civil construction projects such as paper mill factories, steel mill factories, water treatment plants, sewage treatment plants and industrial plants, to small projects according to the client's requirements, in addition to various electromechanical and steel projects.

Since modern equipment plays an essential role in the success of any contracting company, a wide range of modern models of equipment and instruments are available to assure high performance, quality and self sufficiency.

Equipment and instruments vary from large machines such as bulldozers, excavators, loaders, tippers, hydraulic tower cranes, water tanks, trailers, compactors, rollers, concrete batching plants, concrete pumps and transit mixers, to pickups, cars and advanced construction instruments, tools and formwork systems.

ATCCO

Organizational Chart



Major Company Projects

A- Water Treatment Plants & Water Projects

- East & West Zarqa Pump Station
- Construction of Mafraq Sewer Trunk line
- Expansion & Upgrading of Ain Ghazal Septage Receiving Station
- South Amman Sewer Network Project
- Kofranja Wastewater Project
- Samra Waste Water Treatment Plant
- South Amman Waste Water Treatment Plant and Trunk Line
- Construction of Abu Alanda Reservoir
- Huwwara Waste Water Collection System and Trunk Sewer Line
- Wadi Ma'in Zara Mujib Water Treatment Plant & Conveyance Pipeline
- Expansion and Modification of Ain Ghazal W.W.T.P. Project
- Restructuring and Rehabilitation of Greater Amman's Water Supply System
- Black Waste Water Treatment Plant - Mwaqqur
- Madaba Waste Water Treatment Plant
- Wadi Mousa Waste Water Treatment Plant
- Wadi Al Arab Waste Water Treatment Plant
- Wadi Hassan Waste Water Treatment Plant

B- Heavy Industrial Plants

- Tafila Wind Farm Project
- Modern Cement and Mining Project - MCM
- Jordan Abyad Chemical Complex
- Bromine Petra Expansion Project
- New C7 Intake Structure and Associated Lines
- Al-Mafraq Crusher
- Amman East Power Project
- Aircraft Maintenance Facility at QAIA
- Samra Thermal Power Station
- Chlor – Alkali Project at Jordan Bromine Plant

- Jordan Bromine Plant and Aqaba Bromine Project
- Magnesium Oxide Plant
- Abu Alanda Gas Filling Station
- Biogas and Landfill Plant
- **Nuqul Group:**
 - Paper Mill 4 and Jumbo Roll Storage Plant
 - Al Keena Paper Mill
 - Quality Food Factory (UNIUM)
 - Modern Aluminum Plant (MODAL)

C- Factories

- Trust for concrete Industries Factory
- ATCCO-STEEL Factory
- Block Factories
- Petra Aluminum Company Factory
- Ittihad Insulating Glass Company Factory
- Mediterranean Resources Apparel Industry
- Petra Spinning Factory
- Iron & Steel Factory (Zyza)
- Al Jeizah Gas Factory
- Modern Food and Vegetable Ind.
- Fine Hygienic Paper (Expansion)
- Quality Press Factory

D- WareHouses

- Irbid Supply Complex
- Juwideh Supply Complex
- Al Kafreen Supply Complex
- Al Karrak Supply Complex
- Arab Bank Warehouse
- Fine Hygienic Paper (Free Zone)

E- Showrooms

- Lamborghini and Shkoda ShowRooms
- Nuqul - 7th Circle Car Exhibition
- International Car Exhibition

F- Building Projects:

- IKEA Stores Project
- Ayla Marina Village - Phase I
- Al Maabar Mixed Use Dev. - St. Regis Hotel & Serviced Apartments
- Al Hukama Medical Center
- Kempinski Hotel Annex.
- Kilani Health Care Institute
- Manaseer Headquarter Building
- Med Gulf Insurance Building
- Qaser Al-Aqaba Hotel
- Female Student Dormitory
- Ayla Aviation Academy
- New Carrefour Hypermarket at City Mall
- East Amman Safeway Wholesale
- Al-Shreefah Fatemah Bent Naser (3 Packages)
- The Promenade of Jordan/King Hussein Park
- The Parade Garden
- The Cultural Palace Renovation
- The Royal Institute Of Arabian Horsemanship
- Gas Stations (20)
- Private Villas

G- Tunnels and Bridges

- Crown Prince Hussein Bin Abdullah II Intersection
- Airport Highway - Eighth Circle Tunnel
- Construction of Roads and Bridges at Zarqa Stream Area

H. Comprehensive Projects

- Samarah Dead Sea Resort Project - Rift Living Pool Development
- Samarah Dead Sea Project - Infrastructure Works
- King Abdullah II Special Operations
- Training Center (KASOTC) - Phase I
- Jordan International Police Training Center

Our Clients

One of the most rewarding aspects of our business is the opportunity for ATCCO to develop and cultivate relationships through excellent performance.

Since 1988, the company has been fortunate to be able to serve major clients in the region such as:

Ministry of Health
Ministry of Supply
Ministry of Education
Ministry of Water & Irrigation
Ministry of Public Works & Housing
Greater Amman Municipality
Zarqa Municipality
Amra Hotel
Nuqul Group
Nuqul Automotive
Petra Aluminum Co.
The Leadership Co.
Jordan Bromine Co.
Jordan Magnesia Co.
United Iron & Steel Co.
Ittihad Insulating Glass Co.
Modern Food Industries Co.
Attila Dogan (Turkish)
Saudi Oger Ltd.
Jordan Cement Factories Co.
Applied Science University

Jordan Biogas Co. Ltd.
Sigma Consulting Engineers
Jordan Television Corporation
Jordan Petroleum Refinery Co. Ltd.
Jordanian Investment & Supply Co. W.L.L. (SafeWay)
Design Associates & Research Bureau (Darb)
Jordan Aircraft Maintenance Co. Ltd. (JorAMCo)
Samra Electrical Power Generating Co.
Ayla Aviation Academy
Saraya Aqaba Co.
Certified Project Managers (CPM)
DynCorp (American)
GAMA (Turkish)
AES Jordan PSC (American)
Farmatic Co. (German)
Amec E&C Services (British)
Agra Monenco Inc. (Canadian)
Duro Felguera Co. (Spanish)
CDM International Inc. (American)
Albemarle Corporation (American)
Vestas

Jacobs Engineering Inc. (American)
Majid Al-Futtaim Hypermarket L.L.C.
U.S. Army Corps of Engineers (American)
Black & Veatch International (American)
Morganti Group International Inc. (American)
Aircraft Support Industries Pty. Ltd. (Australian)
Kolon Engineering & Construction Co. Ltd. (Korean)
Doosan Heavy Industries & Construction Co. (Korean)
Hazen & Sawyer Environmental Engineers (American)
SAH Jordan
Union Land Development Company
Al-Manaseer Group
Dead Sea Company
Jordan Abyad Fertilizers & Chemicals Comapny.
Med Gulf Company
Modern Cement and Mining Company
PEG (Switzerland)
FLSMIDTH
Kilani health care institute
Al Rabya Hotel Tourism & Commercial Center Co.
Al Maabar Abdoun Real Estate Development Company

An aerial architectural rendering of the Ayla Marina Village Phase I development. The image shows a large, modern residential and commercial complex built along a curved waterfront. The development features numerous multi-story buildings with balconies and terraces, interspersed with green spaces and landscaped areas. A prominent marina area is visible in the foreground, with several large yachts docked at wooden piers. A long, straight promenade or walkway runs along the water's edge, bordered by a low wall and greenery. In the background, a dense urban area with various buildings is visible, separated from the development by a body of water and a bridge. The overall scene is presented in a semi-transparent, blue-tinted style, giving it a futuristic or conceptual feel.

Ayla Marina Village – Phase I

Client: Oasis – 33 Mixed Use Development Co.

Consultant: ARABTECH JARDANEH

Scope of Work Value: US\$ 130 million

Part I. Hyatt Regency Hotel : Approximate built up area of $64,700\text{m}^2$, consisting of 12 blocks, 4-5 story height, 259 guestrooms 43 suites, meeting rooms, restaurants, club, ballroom, spa and fitness center in addition to site improvement works which includes entry court, three major swimming pools with several water features.

Part II. Souk Area: Approximate built up area $41,800\text{m}^2$, 4-5 story height for seven blocks village of residential, commercial and entertainment areas, in addition to site improvement works which includes a series of courtyards and plazas opening from streets and Marina Promenade.

Part III. Souk Hotel: Approximate built up area $14,700\text{m}^2$ consisting of four story height for four blocks, 4 story height with 56 Guestrooms and 14 Suites and all services.



Al-Maabar Mixed Use Development St. Regis Hotel and Serviced Apartments Project.

Client: AL-Maabar Abdoon Realstate Dev.
Company/Arabtec Construction (LLC.)

Consultant: ARABTECH JARDANEH

Scope of work Value: US\$ 42 million

The Project is a mixed use development comprising of the St. Regis Hotel and Serviced Apartments and a branded residence tower sitting on top of a podium, with retail facilities.

The basements extend over the entire site area, housing major utilities containment, hotel service areas, car parking, etc.

The scope of work includes all skeleton works for a six level podium, eighteen floors for the hotel and eighteen floors for the branded apartments with a total area of 126000m².



Kempinski Hotel Annex Project.

Client: Al-Rabya Hotels, Tourism and Commercial Centers Company Ltd.

Construction Management: Consolidated Contractors Company Ltd.- Jordan

Consultant: Design Associates & Research Bureau (DARB).

Scope of work Value: US\$ 21.7 million

The project is a new extension for the existing hotel (Annex).

The work consists of the construction, completion and maintenance of four basements and six upper floors with a total area of 12530m² with all Civil, MEP and finishing works.



Kilani Health Care Institute

Client: Kilani health care institute - Dr.Zaid Kilani

Consultant: The Joint Venture of M/S Madi & Partners Consulting Engineers & Tahan & Bushnaq

Total project value: US\$ 30.6 million

The project comprises the construction of a new general hospital, with an area of 32800m² incorporating more than 80 beds. The project constitutes of two buildings; one rising to an elevation of 4 floors above ground level and the other rising to 10 floors in addition to three basement levels floors to serve the two buildings. The scope of work includes all civil, finishes, electromechanical works with all related external works.



IKEA Stores Project

Client: SAH Jordan and Union Land Development Company
Consultant: Madi and Partner Consulting Engineer.

Scope of work Value: US\$ 41.7 million

The works include all civil, infrastructure, electromechanical and finishing works comprising a cast in place reinforce concrete structure for a building with an approximate area of 54623m², to include ground , first and second floors in addition to a car parking area with the capacity of 970 cars.



IKEA Stores Project



Manaseer Headquarter Building

Client: Manaseer Group

Consultant: Modern Architect Consultant-MAC

Total project value: US\$ 15 million

Project duration: 2010-2013

The project includes seven floors above ground with a total area of 9165m² and three basement floors with a total area of 6860m². The scope of work includes all civil, finishes, electromechanical works with all related external works.



Tafila Wind Farm

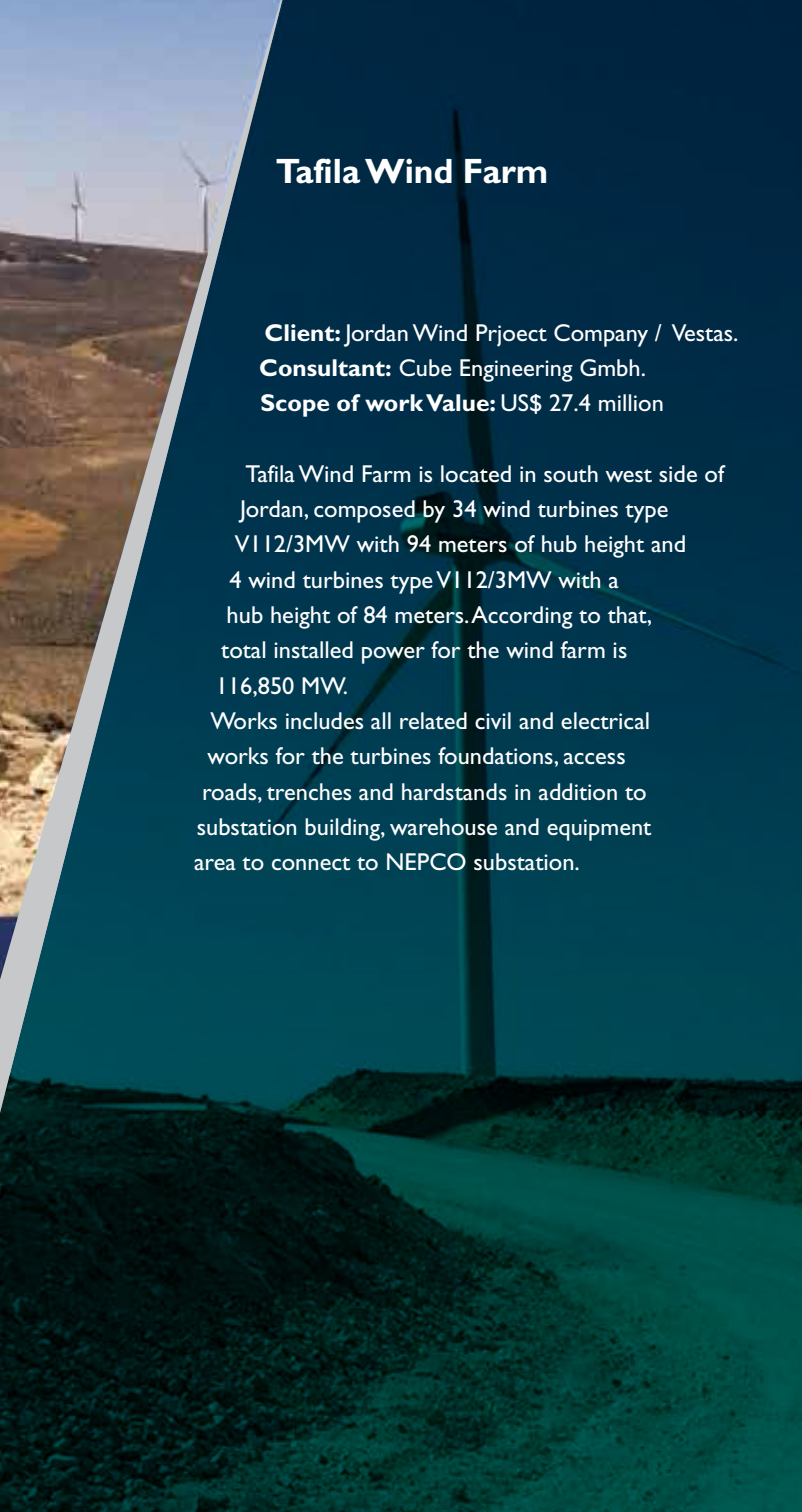
Client: Jordan Wind Project Company / Vestas.

Consultant: Cube Engineering GmbH.

Scope of work Value: US\$ 27.4 million

Tafila Wind Farm is located in south west side of Jordan, composed by 34 wind turbines type VI 12/3MW with 94 meters of hub height and 4 wind turbines type VI 12/3MW with a hub height of 84 meters. According to that, total installed power for the wind farm is 116,850 MW.

Works includes all related civil and electrical works for the turbines foundations, access roads, trenches and hardstands in addition to substation building, warehouse and equipment area to connect to NEPCO substation.





South Amman Waste Water Treatment Plant and Trunk line.

Client: Ministry of Water & Irrigation.

Main Contractor: KOLON E & C

Consultant: Engicon.

ATCCO Contract Value: US\$ 86.5 million

Scope of work included all civil and electromechanical works for the waste water treatment plant with the capacity of 52000m³ per day including , three bioreactor tanks, five settling tanks, two thickener grit chambers, grease removal, splitter boxes & chambers, sludge drying beds, headwork structure, irrigation pumping station, sludge dewatering building, chlorination building, Ras and Was pumping stations A& B, thickener sludge pumping station, influent pumping station, headwork structure and outlet structures. In addition to installation works for all mechanical equipment, infrastructure and land scape works, administration building, generator building, storage and workshop building.

Erection of various diametric ductile cast iron pipes of mechanical joint type and stainless & carbon steel pipes related to this project.

The trunk line works included all piping works for a 3.90 Km length of 1500 mm diameter pipes and a 17.5 Km length of 1200 mm diameter pipes in addition to all protection works and manholes for the line.



Samra Waste Water Treatment Plant

Client: Ministry of Water & Irrigation & Al Samra Wastewater Treatment Plant Co.

Consultant: ECO Consult FICHTNER
WATER & TRANSPORTATION.

Scope of work Value: US\$ 22.4 million

Main scope of work includes the following structures and buildings with all related works:

- Primary Settling Tank.
- Primary Sludge And Scum Piping Chambers & Flow Meter Chamber.
- Aeration Tanks & Distribution Structure.
- Secondary Settling Tanks & Distribution Structure.
- Sludge Recirculation & Extraction.
- Air Blower Building.
- Electrical Substation.
- Chlorination Tank.



Modern Cement & Mining Project MCM

Client: Modern Cement & Mining Co-Manaseer Group

Consultant: PEG(Switzerland)

Designer and equipment supplier:
FLSMIDTH

Total Contract Value: US\$ 340 million

ATCCO Contract Value: US\$ 188 million

Project Duration : 2009-2012

The project is located in Al-Damkhy /Swaqa area 75 Km south of Amman.

The project has two zones; one for mining which is around 3.70 million m² and contains the Coquina; the basic material in cement industry, the other zone is for the factory built on a land area of 800000m² which shall have the latest equipment and technologies to provide Green Field Factory with a production rate of more than 3500 tons of clinker per day.

The scope of work includes the following:
All civil works such as excavations, backfilling and reinforced concrete works estimated to reach 140000m³ of concrete and 15000 tons of steel rebar in addition to all finishing works for all different sophisticated buildings including high rise buildings. In addition to covered huge store buildings with a total area of 40000m² and different concrete silos that reach up to 36m in diameter and heights up to 70m, the scope of work also includes burning facilities with a length of 50 m and a 124m high adjacent building.

Manufacturing and installation of all steel structures works such as hangars, pipe racks, pipes,...etc. with an estimated weight of 14 000 tons of steel with different shapes and sections.

Installation for all equipment in the factory such as ovens, filters, crushers...Etc, with all their necessary pipes, belts and ducts at different heights that reach up to 130m above ground level in addition to all electrical boards and cables, factory commissioning works with all the necessary programs, control and observation systems.



**Modern Cement & Mining
Project MCM**



Crown Prince Hussain Bin Abdullah the Second Intersection

Client: Greater Amman Municipality

Consultant: Consolidated Consultants
Engineering & Environment

Total Contract Value: US\$ 32.50 Million

Project Duration: 2009-2011

The project is a four level intersection on airport road , it includes the construction of the following:

- Upper bridge with two lanes 270m.
- Two levels of underpasses below the airport road.
- Entrance and exit lanes.
- Construction of part of Jabal Arafat Street.
- Reconstruction of 1.3 km of the existing airport road.
- Special reinforced earthing walls.
- The construction of drainage systems and all road furniture (Marking, Signage, Barriers and Lighting.)



**Crown Prince Hussain
Bin Abdullah the Second
Intersection**

East Amman Power Station

Client: AES Jordan PSC, Doosan Heavy Industries & Construction co. Ltd

Total Contract Value: US\$ 350 million

ATCCO Contract Value: US\$ 15 million

Project Duration: 2007-2010

The Amman East Power Project is a 370 MW combined cycle power plant (CCGT) located 30km east of Amman.

The scope of work included all civil, finishing, infrastructure such as sewer line system, storm water system, oily water network and pressurized line in addition to the external works and roads. Total amount of excavation was 125,000m³, backfill 108,000m³, reinforced concrete 43,500m³, 3100 tons of steel reinforcements and 2000m of RCP pipes in addition to 15,000m² of roads.





East Amman Power Station



Qasr Al-Aqaba Hotel – Saraya Aqaba Resort

Client: Saraya Aqaba PSC, JV SAUDI OGER
LTD. & CCC

Consultant: D.G Jones & Partners

Project Duration: 2007-2008

Company Scope of work: US\$ 17.50 million

Qaser Al-Aqaba hotel is an eight level resort with a total area of 44200m .The construction of the hotel includes external pools, domes, arches, stone cladding, textile shades and wooden works.. etc.



Jordan Abyad Chemical Complex

Client: Jordan Abyad Fertilizers & Chemicals Co

Consultant: Jordan Abyad Fertilizers & Chemicals Co)

Total Contract Value: US\$ 138.50 million

ATCCO Contract Value: US\$ 31 million

This project includes a number of chemical plants located in Al-Abyad area near Al-Hesa – south of Jordan.

The scope of work for the company included all civil , finishing and steel structure works, in addition to all external and infrastructure works.

Total amount of excavation was $100,000\text{m}^3$ in hard rock , backfill $50,000\text{m}^3$, reinforced concrete $35,000\text{m}^3$, 4000 tons of steel reinforcements and 1000 tons of steel structure, in addition to $45,000\text{m}^2$ of roads.





Wadi Ma'in, Zara and Mujib Water Treatment Plant and Conveyance Project

Client: Ministry of Water & Irrigation

Morganti Group Inc./Infilco JV

Consultant: Black & Veatch International

Total project value: US\$ 130 million

Project duration: 2004-2006

This project was designed to collect water from Wadi Ma'in, Zara Springs and Mujib Dam, subjecting the combined flows to treatment, including desalination, and conveying the treated water to the existing National Park Pump Station site in Southern Amman.

From this point, treated water will be distributed to Amman residents for municipal, commercial and industrial uses by MWJ/WAI. Up to 8 million m³ per year of the treated water will be conveyed through a separate pipeline to hotels near the Dead Sea at a later date.

- The major components of the company's scope were a water treatment plant located at Swemeh, Al-Gohr with a 53 million m³ of treated water; four pumping stations, a conveyance system and a 40 km pipeline from the water treatment plant to Amman with approximately 160 different manholes and chambers.
- The water treatment plant consists of 26 process structures and buildings which are different in shape, area and function. Most of these structures are huge and very complicated.



**Wadi Ma'in, Zara and Mujib
Water Treatment Plant and
Conveyance Project**



Expansion and Modification of Ain Ghazal Waste Water Treatment Plant Project

Client: Ministry of Water & Irrigation
Morganti Group Inc.

Total project value: US\$ 14 million

Project duration: 2004-2005

The strategic purpose of the Ain Ghazal Pretreatment Plant (AGTP) project is to provide a steady flow at the outlet of the existing operation, maximize the use of the new 1500 mm diameter pipes, optimize the use of the old 1200 mm siphon and minimize the overflow to WADI (environmental concern). The proposed extension and modification of the AGTP included the following:

- New rock trapping chamber and valve chamber.
- New screening and distribution chamber.
- New grit removal and modification of the existing grit removal plant.
- Modification and renovation of the existing aeration tanks.
- Modification and renovation of the existing blower building.
- New box culverts 3 m x 3 m x 270 m.r.
- New DN 1400 pipes 100 m.r.



Restructuring and Rehabilitation of Greater Amman's Water Supply System (C-15)

Client: Ministry of Water & Irrigation
Morganti Group Inc.

Consultant: Hazen & Sawyer

Total project value: US\$ 70 million

Project duration: 2000-2003

The scope of civil and piping construction in this project included the construction of:

- Fifteen reservoirs with capacities of 25000m³, 10000m³, 6000m³, 4000m³, 2000m³ and 1000m³.
- Fifteen pump stations.
- Five elevated water reservoirs 45m in height.
- Installation of all DI, RCP, PVC piping inside all twenty sites.
- During the construction, 45000m³ of concrete were poured with 4200 tons of steel reinforcement, 250000 m³ excavations, in addition to external finishing and building finishing, which included stone cladding and others.

In this project, more than 80% was completed within the first year.



Madaba Waste Water Treatment Plant

Client: Ministry of Water & Irrigation
Kolon Engineering & Construction Co. Ltd.

Consultant: Sigma Consulting Engineers

Total project value: US\$ 7.5 million

Project duration: 2001-2002

The project included the following works:

- Construction of aeration tank with a capacity of 28000m³.
- Construction of anoxic tank with a capacity of 8000m³.
- Drying beds, 173 cells.
- Maturation ponds 5000m³.
- Two thickeners.
- Two settling tanks.
- During the construction, 12000m³ of concrete were poured with 1300 tons of steel reinforcement, 15000m² asphalt paving, 125000m³ excavations and 40000m³ backfill.



Wadi Mousa Waste Water Treatment Plant

Client: Ministry of Water & Irrigation
Morganti Group Inc.

Consultant: CDM International Inc.

Total project value: US\$ 30 million

Project duration: 1997-1999

The Plant is located 270 km to the south of Amman. The following works were executed:

- Two oxidation tanks 7 m x 17 m x 6 m.
- Two clarification tanks - circular shape 14 m Dia. x 5 mh.
- Two sludge holding tanks - conical shape 10 m Dia. x 15 mh.
- Two sets of drying beds 82 m x 35 m.
- Flood retaining wall 165 m.r. x 8 mh.
- Wadi Mousa Pump Station 72 mh x 27 mh x 8 mh.
- Taiba Pump Station 30 mh x 14 mh x 8 mh.
- During the construction, 17000m³ of concrete were poured with 2000 tons of steel reinforcement.





Wadi Al-Arab Waste Water Treatment Plant

Client: Ministry of Water & Irrigation

Consultant: Sigma Consulting Engineers, DAR, and RRI.

Total project value: US\$ 18 million

Project duration: 1996-1998

Construction of a waste water treatment plant with a capacity of 25000m³ per day located 140 km to the north of Amman.

The following works were constructed:

- Six aeration tanks 72 m x 18 m x 5.2 m each.
- Six sedimentation tanks 21 m Diameter x 5.0 m each.
- Three sludge holding tanks with circular and conical shapes.
- Nine box culverts 11 m x 21 m x 3 m height.
- During the construction, 40000m³ of concrete were poured with 5000 tons of steel reinforcement within 14 months of difficult conditions.



Wadi Hassan Waste Water Treatment Plant

Client: Ministry of Water & Irrigation

Consultant: Ministry of Water & Irrigation.

Total project value: US\$ 7.5 million

Project duration: 1997-1998

Construction of a waste water treatment plant 90 km north of Amman.

The following works were executed:

- Two aeration tanks - rectangular with semi-circular shape 60 m x 15 m x 6 m each.
- Two sedimentation tanks - 14 m Diameter x 4 mh.
- One sludge holding tank 8 m Diameter x 10 mh.
- Distributaries structures, grit chamber screen, pump station 26 m x 12 m x 6 m.
- During the construction, 7000m³ of concrete were poured with 800 tons of steel reinforcement within 8 months.



Aircraft Maintenance Facility at QAIA - Jordan

Client: Jordan Aircraft Maintenance Co. Ltd. (JorAMCo) and Aircraft Support Industries pty. Ltd. (Australian).

Consultant: Jordan Aircraft Maintenance Co. Ltd. (JorAMCo).

Total project value: US\$ 18 million

Project duration: 2007 (9 Months)

The scope of work included all civil, electrical and mechanical works for a multi-span hangar 155 m x 88 m x 30 m height with the construction of 17 m height reinforced concrete columns with steel hinges to allow for hangar movement, in addition to a 3255m² mezzanine floor.

Scope of work also included the supply and installation (S&I) of the following:

- Special fire fighting foam deluge system with Viking foam grating nozzles and sensitive flame detectors.
- Under floor heating system for 13000m² floors with boilers
- Sprinkler system.
- Fire alarm system.
- HVAC system.
- Special fire rated man doors, motorized roll-up fire rated doors, tail doors, etc...



**Aircraft Maintenance
Facility at QAIA - Jordan**



Paper Mill 4 and Jumbo Roll Storage Plant (Al-Snobar)

Client: Nuqul Group

Consultant: Modern Engineering Group & Design Associates & Research Bureau (Darb).

Project total value: US\$ 100 million

Project duration: 2006-2007

- This project is an advanced hygienic paper mill factory with an extraordinary structure, which contains a lot of different shapes and capacities; the production of top slabs, tanks, trenches, electrical and mechanical manholes and pits, different kinds of pipes, a big number of sophisticated machine foundations, retaining walls, pipe racks, box culverts, as well as finishing works such as block, plaster, different kinds of tile, cable racks, cables, lighting, air conditioning, ducts, a sanitary system and a storm water system.
- Total concrete quantity of 25000m³ with 2700 tons of steel reinforcement.



Samra Thermal Power Station

Client: Samra Electrical Power Generating Co.

Consultant: J.V. Gama and Black & Veatch.

Total project value: US\$ 170 million.

Project duration: 2004-2006.

Samra Thermal Power Station consists of huge and specialized structures for industrial equipment such as gas turbine foundations, equipment foundations, elevated structures for a steam turbine, fuel tank foundations, a DM plant building, and dike walls, in addition to sub-stations, service buildings, complete infrastructure such as a storm system, a drain system, roads, Rip-Rap protection, retaining walls, site fencing, etc...



Jordan Magnesium Oxide Plant and Jordan Bromine Plant





Jordan Bromine Plant

Client: Jordan Bromine Co.

Consultant: AMEC, KENTZ & Jordan Bromine Co.

Projects duration: 2001-2012

Scope of work done in 2001-2006 as follows:

- **C1:** Earth works, infrastructure and W.W.T.P.
- **C10:** Civil works and pre-cast concrete sleepers for 6 km brine line, tail brine and other lines from JBC plant to C7 and the Truce Canal.
- **C13:** Aqaba terminal facility.
- **C19:** Asphalt works and fire fighting systems.
- **C20:** Mechanical works, a fire fighting system, and deluge systems.
- **60000 Expansion project** (civil and mechanical works) including boiler and chimney erection, the new centrifuge erection, and the required mechanical and piping works.

The value of the above works is 5 million USD

- **2003-2004 - Chlor-Alkali Project:** Design and build project for both steel structure and civil works which included all underground and above ground structures consisting of 4000m of concrete, 500 tons of steel reinforcement bars, 600 tons of steel structure and all necessary works with a total value of 3.0 million USD.
- **2012-New C7 intake structure and associated feed and tail brine line project** with a total scope of work value of 4.5 million USD.
- **2012-Bromine Petra Expansion Project:** the scope of work for this project includes all civil electromechanical works including instrumentation and installation, in addition to infrastructure works for the expansion of Jordan Bromine Company Plant with a total scope of work value of 8.5 million USD.



Jordan Magnesium Oxide Plant

Client: Jordan Magnesite Co.

Consultant: Jacobs Engineering Inc.

Engineer: J.V. Agra Monenco (AMEC)
and Attila Dogan

Total project value: US\$ 80 million

Project duration: 1999-2002

The construction included the following:

- Civil works and foundations for plant steel structure buildings.
- Elevated foundations for Rotary Lime Kiln 8 m x 6 m x 7 m.
- Construction of huge storage silos foundations (one pour 2000m³).
- Service Buildings including 2000m² finishing.
- Six sub-stations 6 meters high 4000m².
- Storm and sanitary systems (GRP, DIP, and UPVC pipes).
- A fire fighting system.
- Soil cement stabilizations.
- Road asphalt paving 150000m².
- Reinforced Concrete 37000m³, re-bars 3000 ton.



Abu Alanda Gas Liquid Project

Client: Jordan Petroleum and Duro Felguera Co.

Consultant: Jordan Petroleum Refinery Co. Ltd.

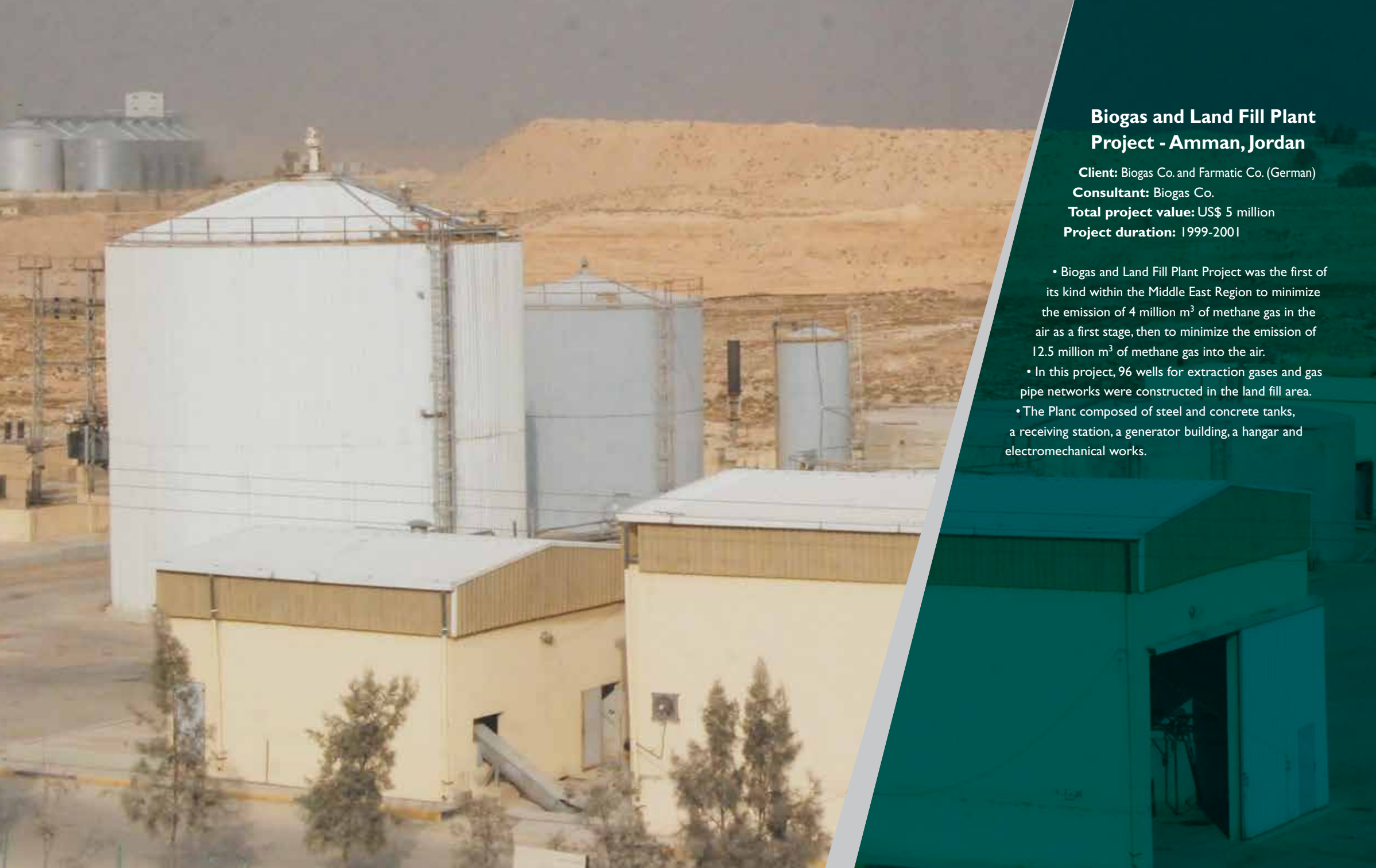
Total project value: US\$ 70 million

Project duration: 2000-2001

The construction of this project included all civil works of gas storage tanks and filling station for Jordan Petroleum Company.

This project also included the following works:

- Three 500 ton vessel foundations 90 m x 7 m.
- Deep manholes 80 MI-IS.
- Crash barrier walls 250 m.r.
- Excavations in hard rock 25000m³.
- Backfill 10000 m³.
- Concrete box culvert 150 m.r.
- Special sand fills below and around vessels 20000m³.
- A storm water system 850 m.r.



Biogas and Land Fill Plant Project - Amman, Jordan

Client: Biogas Co. and Farmatic Co. (German)

Consultant: Biogas Co.

Total project value: US\$ 5 million

Project duration: 1999-2001

- Biogas and Land Fill Plant Project was the first of its kind within the Middle East Region to minimize the emission of 4 million m³ of methane gas in the air as a first stage, then to minimize the emission of 12.5 million m³ of methane gas into the air.
- In this project, 96 wells for extraction gases and gas pipe networks were constructed in the land fill area.
- The Plant composed of steel and concrete tanks, a receiving station, a generator building, a hangar and electromechanical works.



Nuqul Group Complex

Client: Nuqul Group

Consultant: Nuqul Group

Project duration: 8 months

This project included the construction of three big plants:

1. Modern Aluminum Plant (MODAL)

construction of a 22000m² plant with all machinery foundations, an anodizing plant and settling tanks with a treatment plant.

2. Al-Keena Paper Mill

To produce hygienic paper pulp made on a total covered area of 18000m², with all the facilities required for one of the most sophisticated plants.

3. Quality Food Factory (UNIUM)

Total built-up area of 6000m², this project was constructed with the best standards of building to match the food grade industry requirements to provide the cleanest and most air-tight controlled atmosphere for the production hall, call stores and finished product stores.



Nuqul - 7th Circle Car Exhibition

Nuqul Automotive

Client: Nuqul Group

Consultant: Nuqul Group

Total project value: US\$ 1.1 million

Project duration: 2006 (3 months)

The construction of this project included all civil and finishing works for a 2600m² building, such as ceramic and marble tiles, gypsum boards, false ceilings and all mechanical and electrical works for the building and mezzanine floors, in addition to the external finishes and asphalt yards.





Carrefour

New Carrefour Hypermarket at City Mall – Amman, Jordan

Client: Majid Al-Futtaim Hypermarket L.L.C.

Consultant: Certified Project Managers (CPM)

Company scope of work: US\$ 2.85 million

Project Duration: 2006

The scope of work included all finishing works for a 20000m² building, such as ceramic tiles, special internal paint, gypsum boards, false ceilings, fire rated wooden doors, fire rated steel shutter doors, handrails, etc...



East Amman Safeway Store - Al-Muqablain, Jordan

Client: Jordan Investment & Supply Co.W.L.L

Consultant: Design Associates &
Research Bureau (Darb)

Company scope of work: US\$ 2.35 million

Project duration: 2005-2006

The scope of work included the construction of a basement floor with rooms for boilers and pumps, in addition to a water reservoir.

It also included a 8770m² ground floor for promotions and home-center freezers, in addition to a 3000m² mezzanine floor for management, food court with all external works, boundary walls and parking areas.





Al-Shareefah Fatemah Bent Naser Mosque

Client: Ministry of Public Works & Housing

Consultant: Ministry of Public Works & Housing

Total project value: US\$ 1.4 million

Project duration: 2003-2006

The scope of work included the construction of a mosque with unique structure domes, vaults and Islamic arches.

This Project had been constructed in four stages:

- First stage: super structure works.
- Second stage: external works which included granite tiles, Islamic arches, plastering and wooden doors.
- Third stage: the works included aluminum steel doors, waterproofing, external yards, electrical and mechanical works.
- Fourth stage: included stone tiles, all wooden works, paints, gypsum works, false ceilings, light fixtures and mechanical works.



Al-Shareefah Fatemah Bent
Naser Mosque



King Abdullah II Special Operations Training Center - Phase I

Client: U.S Army Corps of Engineers (USACE)

Consultant: U.S Army Corps of Engineers (USACE)

Total project value: US\$ 1.7 million

Project duration: 2006-2007

- The project scope of work included the full design and construction of two gatehouses, an engineering building, with the design and installation of plumbing, HVAC, fire protection and electrical systems for the above buildings, and a perimeter fence with gates according to the requirements of USACE.
- The scope of work also included rough grading, drainage, temporary utilities with connections for future tie-ins to permanent utilities, a geotechnical investigation and topographic mapping.



The Promenade of Jordan Project at King Hussein Park

Client: Greater Amman Municipality
Consultant: Greater Amman Municipality
Total project value: US\$ 2.70 million
Project duration: 2002-2003

This project represents and shows the historical events, culture, society, architecture, and art from the ancient Paleolithic, Neolithic, Calocholitic stages up to this Era. It was built in a modern way with high performance quality. The elements of this project are mainly composed of stone, marble mosaic, steel works, wood work, etc...

The total length of this project is about 450 m.





The Royal Institute of Arabian Horsemanship

Client: Saeed Al-Hnadi

Consultant: Faris Buqaen Engineering Office.

Total project value: US\$ 1.2 million



Airport Highway Gas station



**Samarah Dead Sea Project -
Rift Living Pool Development**

